

SPECIAL PRODUCTS

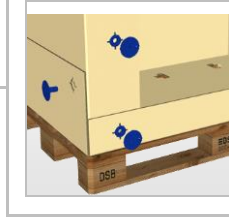
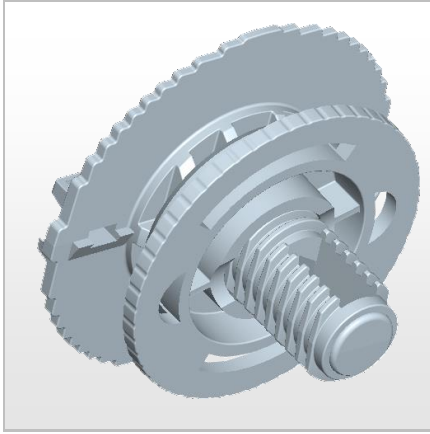


THIMM Connect

Plastic locking system

Global packaging competence.
Customized solutions.

THIMM
Packaging Systems



CONSTRUCTIONAL FEATURES

- » Connecting element for two corrugated cardboard components
- » Plastic (PP) lock consisting of a screw and nut
- » The edge threads of the nut lock securely inside the packaging
- » THIMM Connect is available in two sizes
- » Optimum use with heavy-duty corrugated cardboard: 3 and 4-flute
- » It can if required (air freight) be sealed with a seal



CONSUMER BENEFITS

- » No aids or special tools are required
- » Packaging can be repeatedly opened/disassembled
- » The packaging is reusable



ENVIRONMENTAL ASPECTS/SUSTAINABILITY

- » Packaging can be disposed of separately and is 100% recyclable